

Town of Brookfield Development Map

As of November 14, 2005

- VT route/TH cls 1
- TH cls 2
- TH cls 2 gravel
- TH cls 3
- TH cls 3 gravel
- TH cls 4 (not all passable)
- trail
- private
- US route
- US interstate
- VT forest hwy

tax parcel bounds

DISTRICTS


- EAST VILLAGE
- POND VILLAGE
- POND VILLAGE EXTENDED
- AGRICULTURAL/RESIDENTIAL
- SCENIC PROTECTION
300' road CL buffer
- PUBLIC LANDS
- CONSERVATION
>25% slope & Wetlands

- Existing Pond Village District was created by referring to the written description in the revised bylaws.
- Extended Pond Village District was created by buffering the Stone Road, 300 feet on both sides.
- East Brookfield District was created by buffering Route 14, 500 ft on both sides.
- Scenic Protection Areas District includes the Brookfield Gulf Area and the Williamston Gulf Area by buffering Route 12 and Route 14 at designated areas by 300 feet on both sides of the roads.
- Public Lands Districts were derived from VT Conserved Lands Database from UVM-SAL.
- Conservation District comprises steep slope > 25% (USGS DEM) and VT Significant Wetlands Inventory (VSWI) areas buffered 75 feet.
- Agricultural/Residential District includes all other areas not previously defined.

Shoreland and Flood Hazard Areas shown on separate map.

This map depicts development districts as defined in Brookfield's bylaws. The language of the bylaws shall govern the interpretation of this map and shall supersede the map in event of conflict.

State Plane Meters, NAD 83



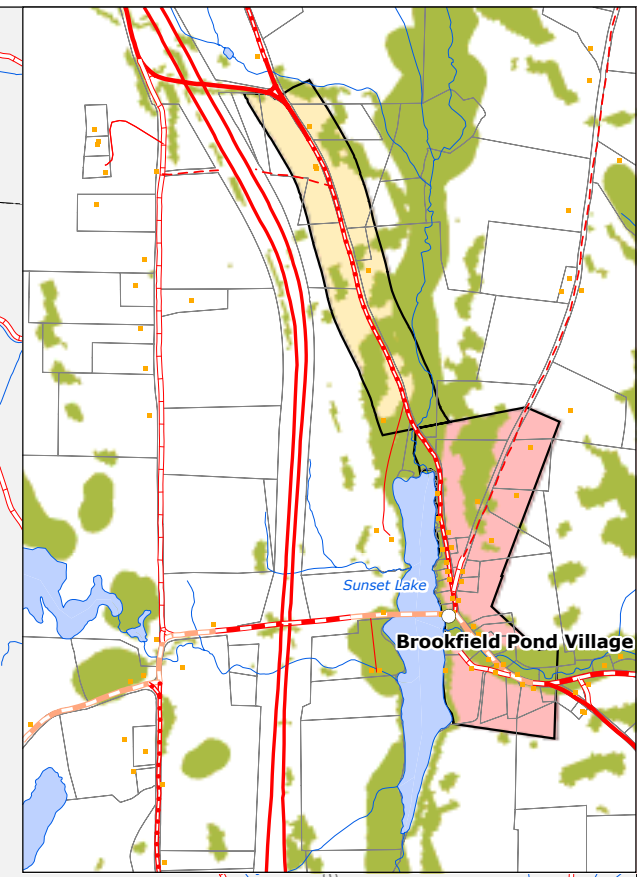
GIS
for info & data
www.vcgi.org

For planning purposes only.
Not for regulatory interpretation.

TWO RIVERS-OTTAUQUECHEE
REGIONAL COMMISSION



GIS Service Center
3117 Rose Hill
The King Farm
Woodstock, VT 05091
802-457-3188
www.trorc.org



1:21,600

1 inch equals 1,800 feet
0 0.25 0.5
Miles

1:42,000

1 inch equals 3,500 feet
0 0.5 1
Miles

